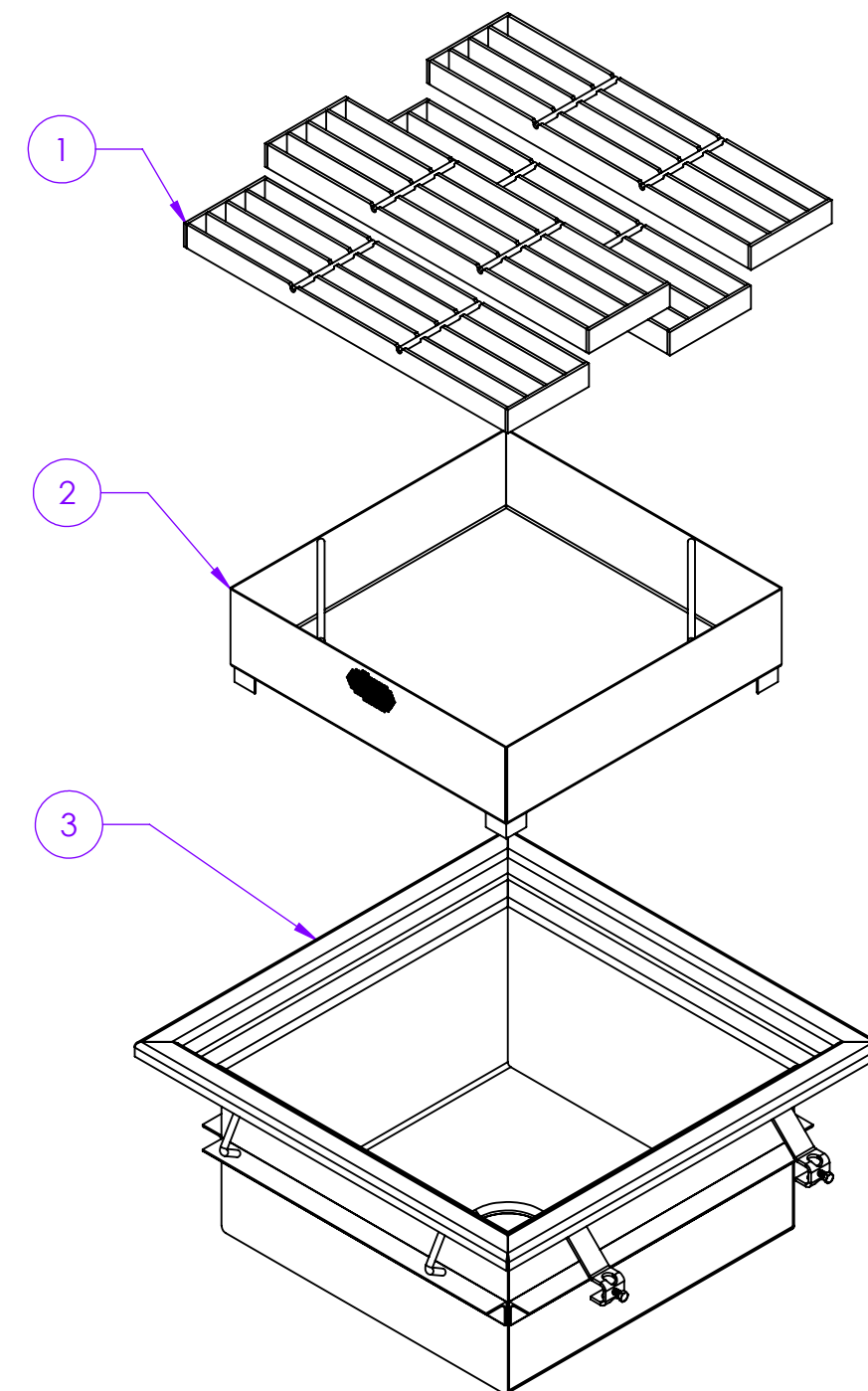
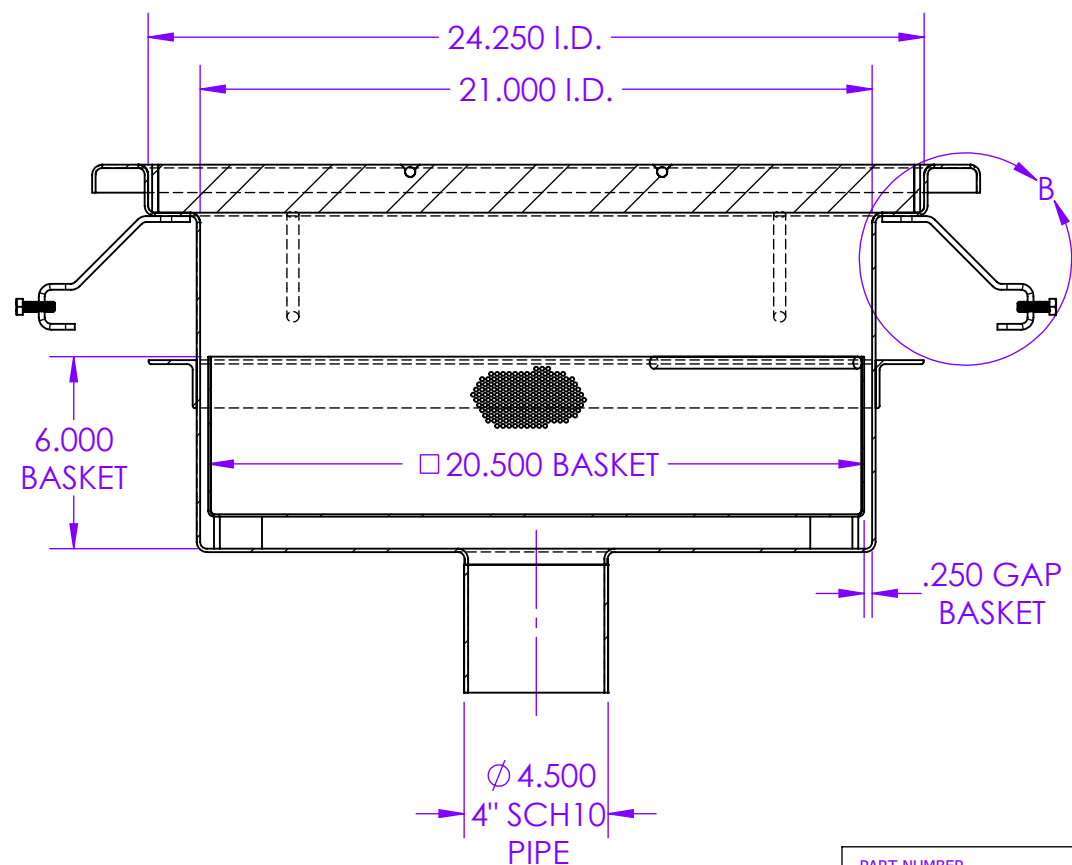
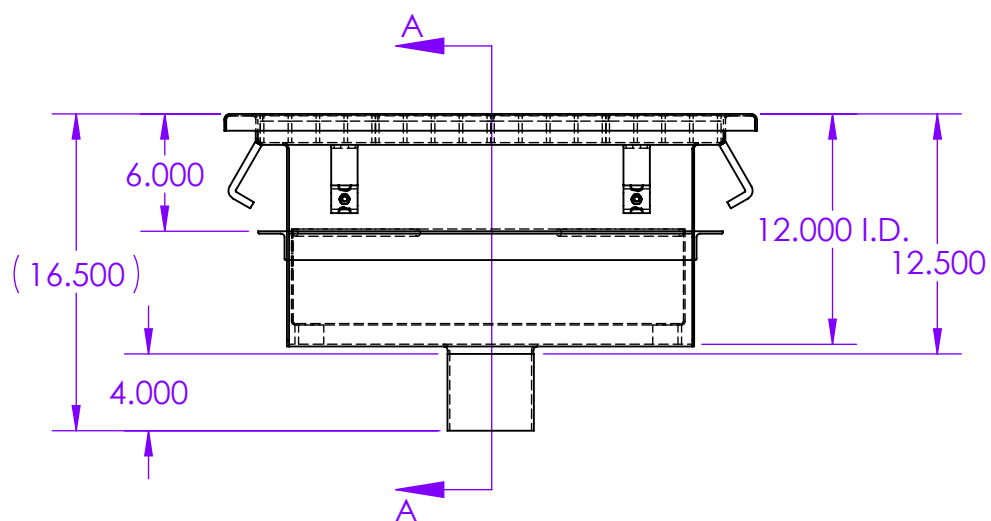
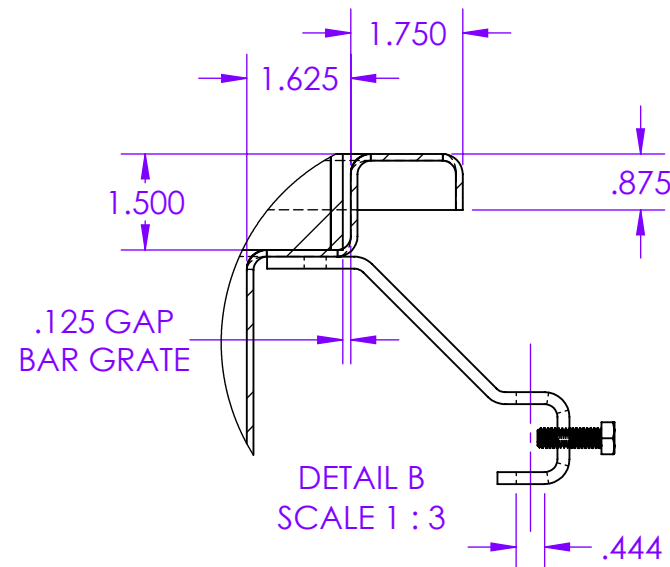
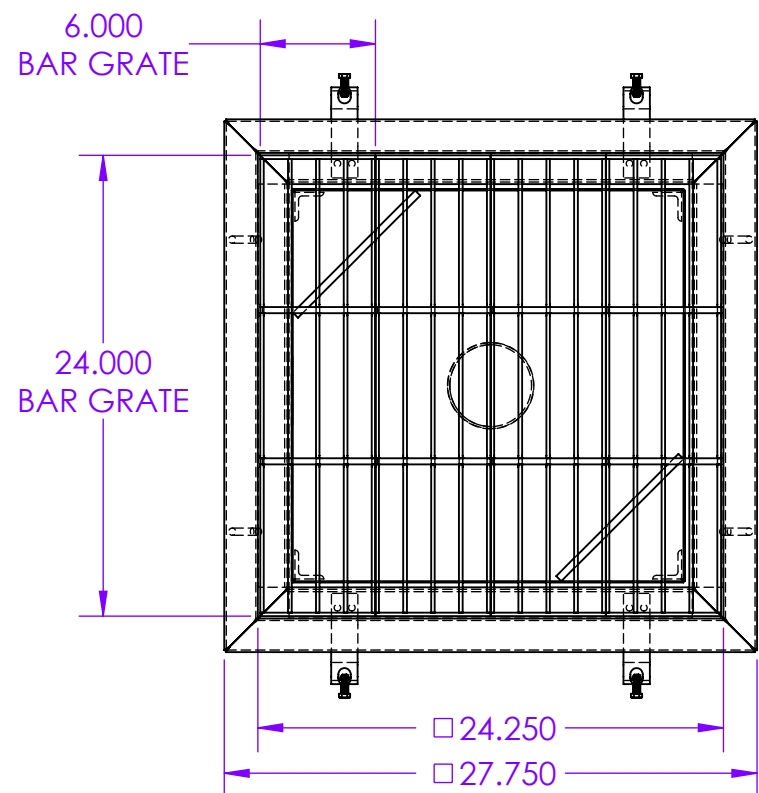


ITEM	QTY.	PART NUMBER	MATERIAL	ASSEMBLY MATERIAL	MATERIAL THICKNESS	DESCRIPTION	PRODUCT NUMBER
1	4	16379	304	Stainless Steel	7 ga-3/16"	WLD BANDED BAR GRATE 7GA	TDA-CVFS-24X06
2	1	16870	1/8 IN PERF	Stainless Steel	14 ga	20.50X20.50X6D FLOOR SINK BASKET	FSA-BSKT-2424-1
3	1	16841	304	Stainless Steel	.1054	24 X 24 X 12 FLOOR SINK 4 SCH10	FSA-B-242412-B41



NOTES:

CONSTRUCTION

- *BODY 12GA T304 2B
- *4" SCH10 T304 PIPE OUTLET (BOTTOM OUTLET)
- *T304 CEMENT ANCHORS
- *T304 LEVELING BRACKETS
- *T304 ANGLE PERIMETER STIFFENERS
- *INSIDE WELD DISCOLORATION REMOVED, O.S. DISCOLORATION TO REMAIN

GRATING

- *3/16" X 1-1/2" LOAD BANDED BARGRATING W/2
- *5/16" SUPPORT RODS (NOT CONTINUOUSLY WELDED) PER SPEC T304 SS

SECTION A-A

PART NUMBER FS-242412-B41		REVISION -	VERSION 3
DESCRIPTION 24 X 24 X 12D FLOOR SINK 4 SCH10		MATERIAL Stainless Steel	WEIGHT 30.90
		TOLERANCE Unless otherwise noted refer to Standard Tolerances	
Pearson Potts - CustomDrains.com			